



SERVICE MANUAL BS-110

VERSION 1.2

**EC DECLARATION OF CONFORMITY**

in accordance with Appendix II sub A of Directive 2006/42/EC

DIAMATIC USA

5220 Gaines Street
San Diego, CA 92110
Tel: 866.295.5512
Fax: 619.295.0754
info@diamaticusa.com

Declare under our sole responsibility that the machine as described below conforms with the Health and Safety requirements of the European Directive of the machine Safety.


In case of changes to the machine without our written authorization this declaration loses its validity.

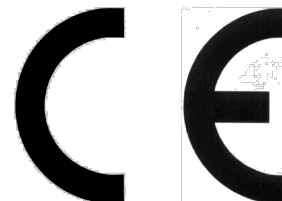
Model: **DIAMATIC** **BS-110-0135** **MK III**
BS-110-0235 **MK III**

Serial number: **xxxxxB**

1. satisfies the conditions set out in the Machine Directive (Directive 98/37/EC); Low voltage directive (73/23/CEE, as last amended; EMC directive 89/336/CEE, as last amended)
2. satisfies the following harmonized standards:
EN 12100-1, EN 12100-2, EN60335-1 and EN55014-1

Nieuwegein 13-11-2013


Michiel Kalisvaart



Index

1. Spare parts	04
Contact	12



1. Spare parts

Fig. 01

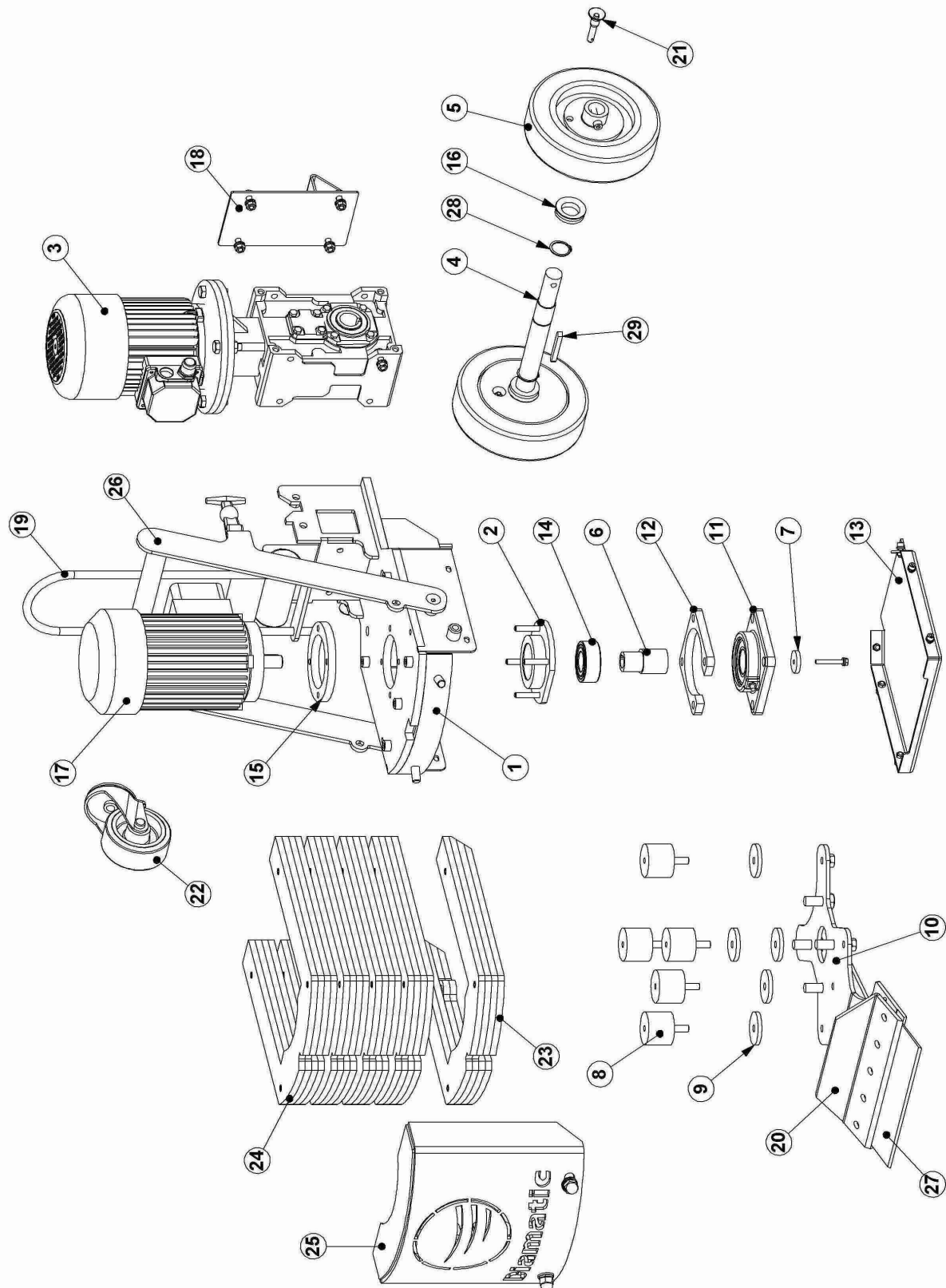


Fig. 01

Item	Part number	Description	Qty.
1	E09307	Frame BS-110	1
2	E09308	Support bearing house	1
3	E09311	Drive motor	1
4	E09313	Drive shaft	1
5	E09315	Wheel with hub	2
6	E09319	Eccentric bush	1
7	E09235	Motor washer	1
8	E09208	Shock absorber	5
9	E09320	Fill up washer	5
10	E09738	Cutting head	1
11	E09215	Cutting head bearing	1
12	E09321	Bearing plate	1
13	E09328	Bottom plate	1
14	BG11817	Bearing	1
15	E09359	Fill up plate	1
16	E09386	V-ring seal	2
17	E09355	Motor 0,75kW (230V)	1
	E09356	Motor 0,75kW (110V)	1
18	E09381	Step on bracket	1
19	E09384	Lifting eye	1
20	E09739	Blade cover	1
21	478198	Quick release pin	2
22	971518-1	Swivel castor	1
23	E09378	Bottom weight	1
24	E09379	Add on weight	4
25	E09380	Weight cover	1
26	E09382	Transport handle	1
27	E09502	Heavy Duty blade 254x76x2,5	1
28		Circlip Ø28 for shaft	2
29		Key 8x7x60	1

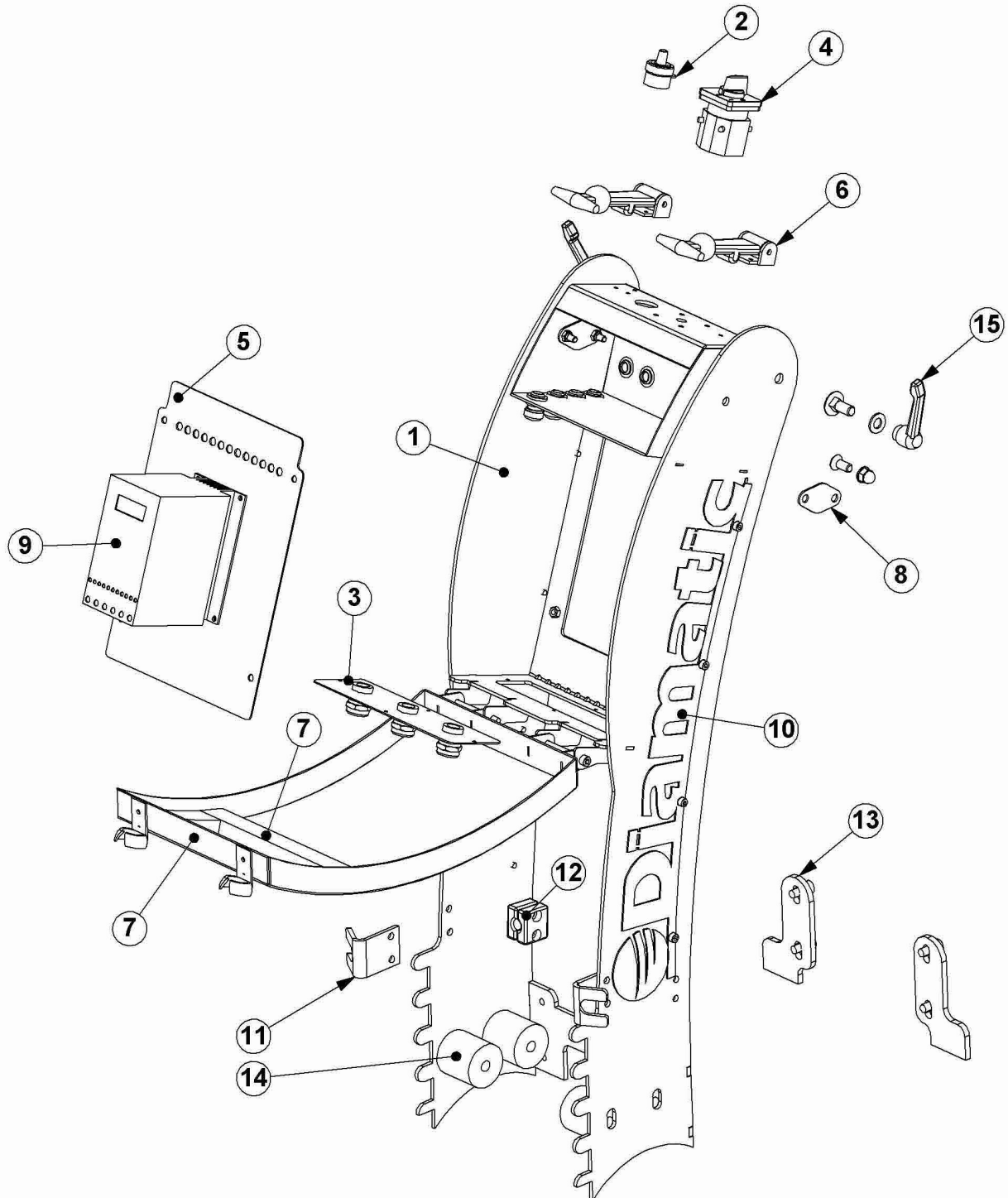
Fig. 02

Fig. 02

Item	Part number	Description	Qty.
1	E09322	Steering handle	1
2	E00866	Potentiometer	1
3	E09354	Cable gland plate	1
4	E09360	Switch	1
5	E09352	Plate for frequency inverter 220V IP20	1
	E09353	Plate for frequency inverter 220V IP65	1
	E09365	Plate for frequency inverter 110V IP20	1
6	500-1195	Rubber latch assy	2
7	E09406	Front cover	1
8	E09943	Plug for electrical box	2
9	E09349	Frequency inverter 220V IP20 3x230 out	1
	E09350	Frequency inverter 220V IP65 3x230 out	1
	E09351	Frequency inverter 110V IP20 3x230 out	1
10	E07380	Diamatic logo radius	2
11	E09383	Latch plate	2
12	999-9159	Pipeclamp 12mm set	1
13	E09332	Scraper plate	2
14	E09324	Distance bush	4
15	BE0641	Clamp lever	2

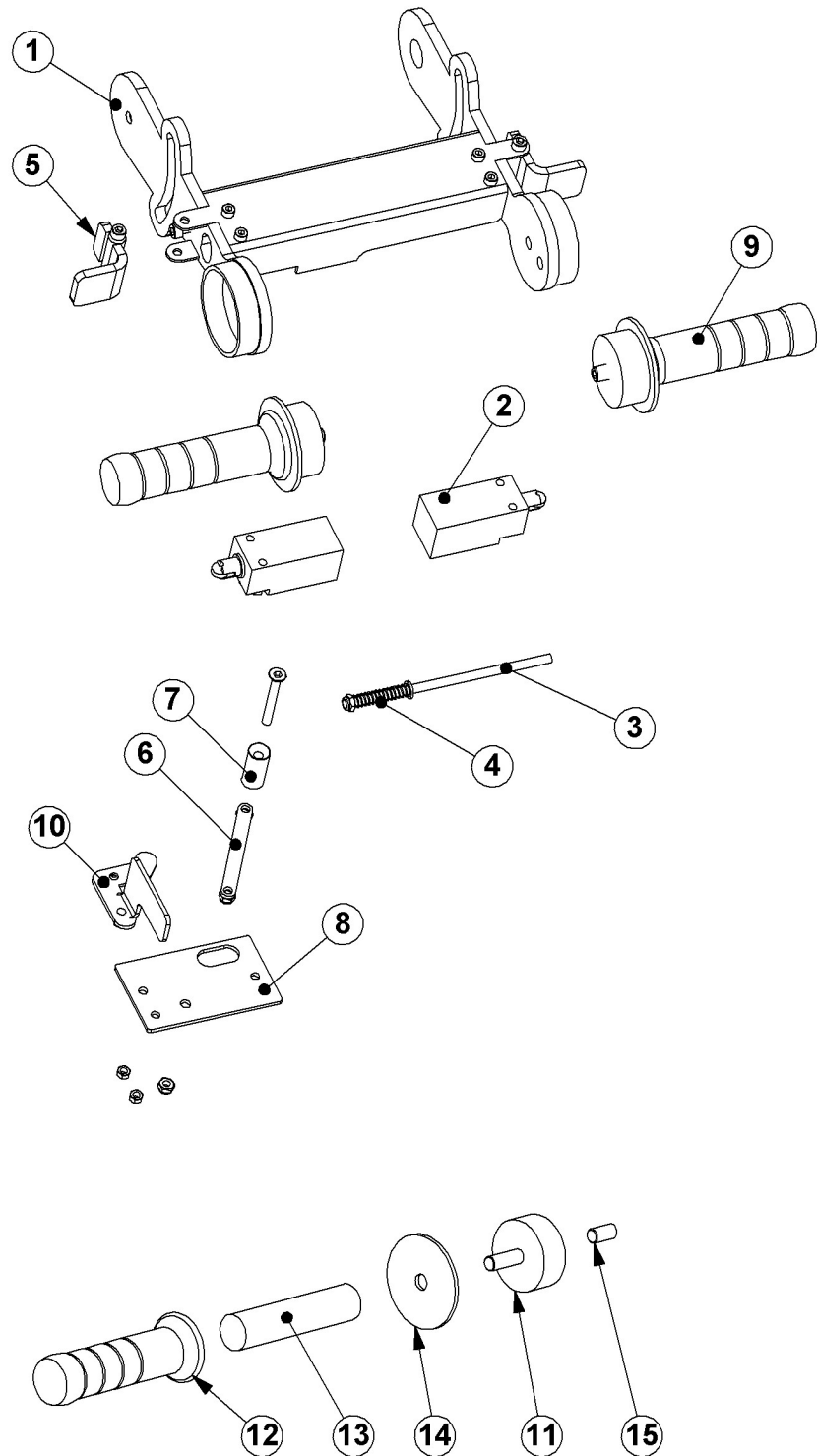
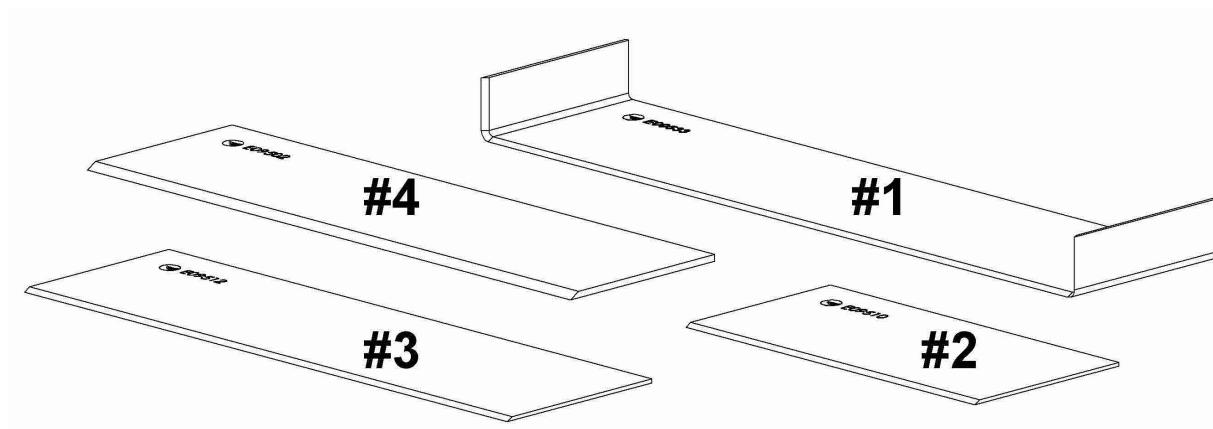
Fig. 03

Fig. 03

Item	Part number	Description	Qty.
1	E09323	Handle bar	1
2	454796	Limit switch	2
3	E09343	Switch shaft	1
4	E09342	Spring	1
5	E09344	Switch lever	2
6	E09346	Connection lever	1
7	E03078 -1	Bush	1
8	E09345	Bottom cover	1
9	E09566	Flex handle complete	2
10	E09347	Inner switch lever	1
11	DG29	Shock absorber	1
12	453290	Handle grip	1
13	E09567	Handle bar	1
14	E09568	Handle washer	1
15		M10x20 set screw	1

Blades

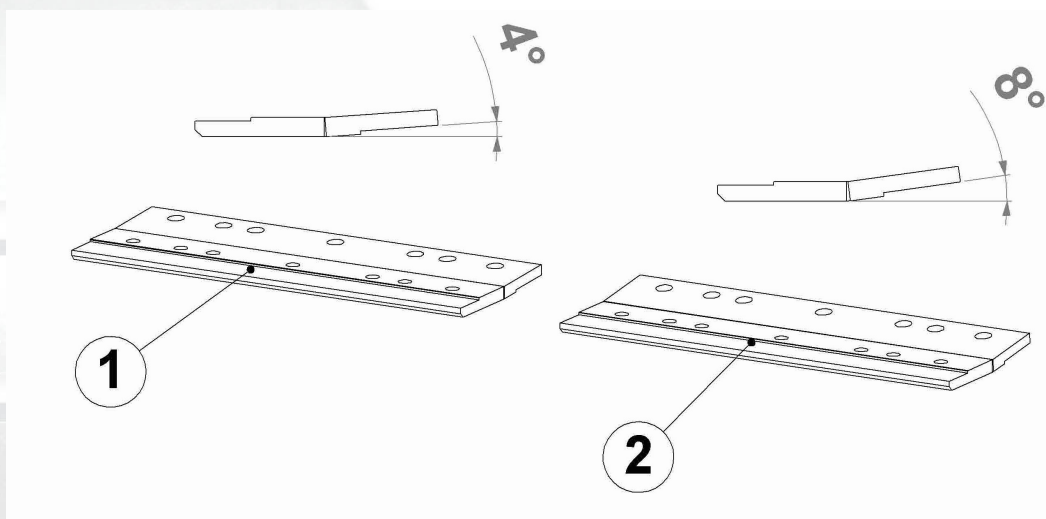


Blade #1 (Part No. E09533) - 305 x 76 mm, thickness 1,5 mm
self-scoring blade, bevel up, carpet, soft (PVC, linoleum, rubber)

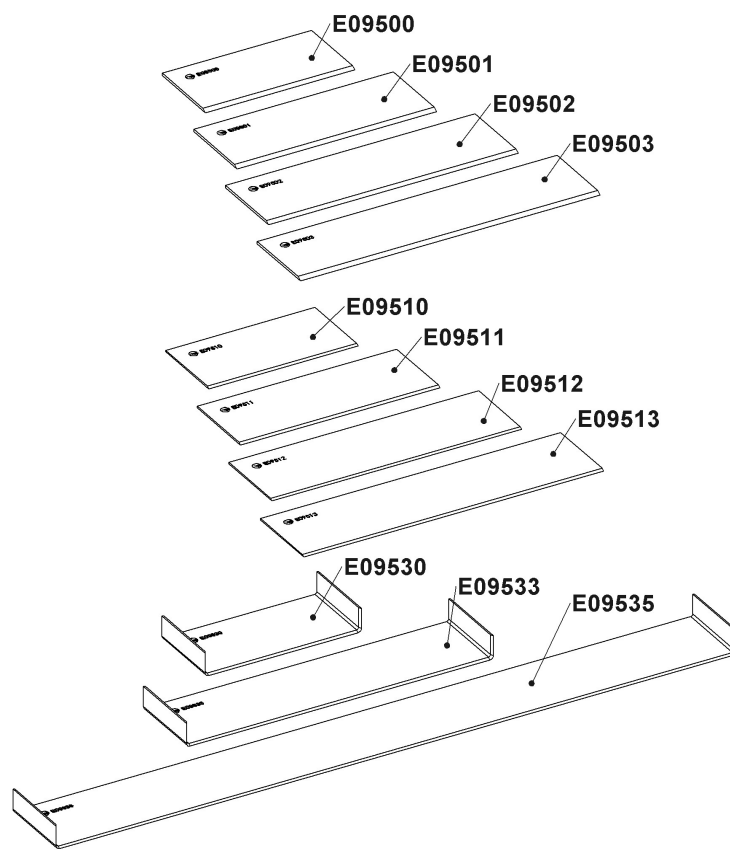
Blade #2 (Part No. E09510) - 152 x 76 mm, thickness 1,5 mm
tile or linoleum on wood floors, difficult surfaces (ceramic, hardwood, heavy tile, etc.)

Blade #3 (Part No. E09512) - 254 x 76 mm, thickness 1,5 mm
carpet, tile or resilient on wood & concrete floors

Blade #4 (Part No. E09502) - 254 x 76 mm, thickness 2,5 mm
carpet, tile, PVC, Vct, tough coatings, hardwood & cork



Item	Part number	Description	Qty.
1	E09416	Angle adjustment 4 degrees	1
2	E09417	Angle adjustment 8 degrees	1



All blades can be used for (elastomeric) coatings, tile, carpet, rubber tiles, cork, glue, PVC, linoleum and all other applications.

- The stronger the adhesive, the smaller the blade you have to use.
- Use thicker blades for longer lifetime or hard material to remove.

Item	Part number	Description	Qty.
	E09500	Heavy Duty blade 152x76x2,5mm (6")	
	E09501	Heavy Duty blade 203x76x2,5mm (8")	
	E09502	Heavy Duty blade 254x76x2,5mm (10")	
	E09503	Heavy Duty blade 305x76x2,5mm (12")	
	E09510	Premium blade 152x76x1,6mm (6")	
	E09511	Premium blade 203x76x1,6mm (8")	
	E09512	Premium blade 254x76x1,6mm (10")	
	E09513	Premium blade 305x76x1,6mm (12")	
	E09530	Self-scoring blade 152x76x1,5mm (6")	
	E09533	Self-scoring blade 305x76x1,5mm (12")	
	E09533	Self-scoring blade 685x76x1,5mm (27")	



DIAMATIC USA

5220 Gaines Street
San Diego, CA 92110
Tel: 866.295.5512
Fax: 619.295.0754
info@diamaticusa.com

DIAMATIC USA EAST

622 Grant Road
Folcroft, PA 19032
Tel: 866.295.5512
Fax: 619.295.0754
info@diamaticusa.com